

Procedure 6.4 - Replacing the Lift Platform

WARNING

Always turn off the circuit breaker and unplug the treadmill before you remove the treadmill hood.

Removing the Lift Platform

1. Turn off the treadmill with the circuit breaker, then unplug the power cord from the wall outlet.
2. Place the treadmill on its right side.

Note:

To avoid scratching or marring the treadmill, put a drop cloth underneath the treadmill when you perform Step 2.

3. Remove the lower bolt and nut that secures the lift motor to the lift platform. It is not necessary to remove the lift motor when you remove the lift platform.
4. Skip this step on C962i and C964i treadmills. Remove the bolt that connects the actuator block to the lift platform. (See Diagram 6.3B)
5. Perform this step on C962i and C964i treadmills, only. Remove the nut that retains the lift potentiometer and remove the lift potentiometer. Remove the coupler that connects the lift potentiometer to lift platform shaft. Note the orientation of the flat side of the lift platform shaft. When it is replaced, later in this procedure, it must be remounted in the same orientation. If the lift shaft is incorrectly oriented the lift system calibration will be incorrect. Remove the retaining ring from the lift shaft. Use a thin drift punch or similar tool to carefully drive the pin out of the lift shaft on the left hand (lift potentiometer) side of the lift platform. Remove the lift shaft. (See Diagram 6.3A)
6. Remove the bolt(s) and nut(s) that secure the lift platform to the treadmill frame. Remove the lift platform.

Diagram 6.3A - Lift Shaft Orientation

REAR
←

FRONT
→

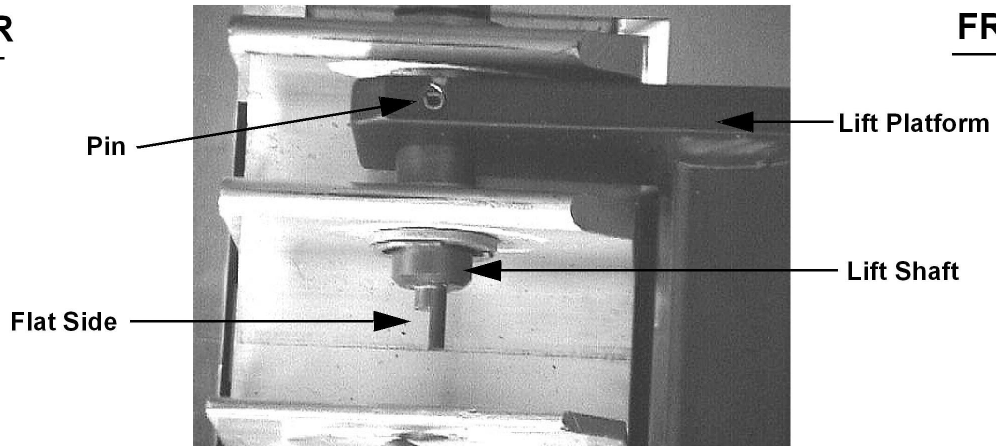
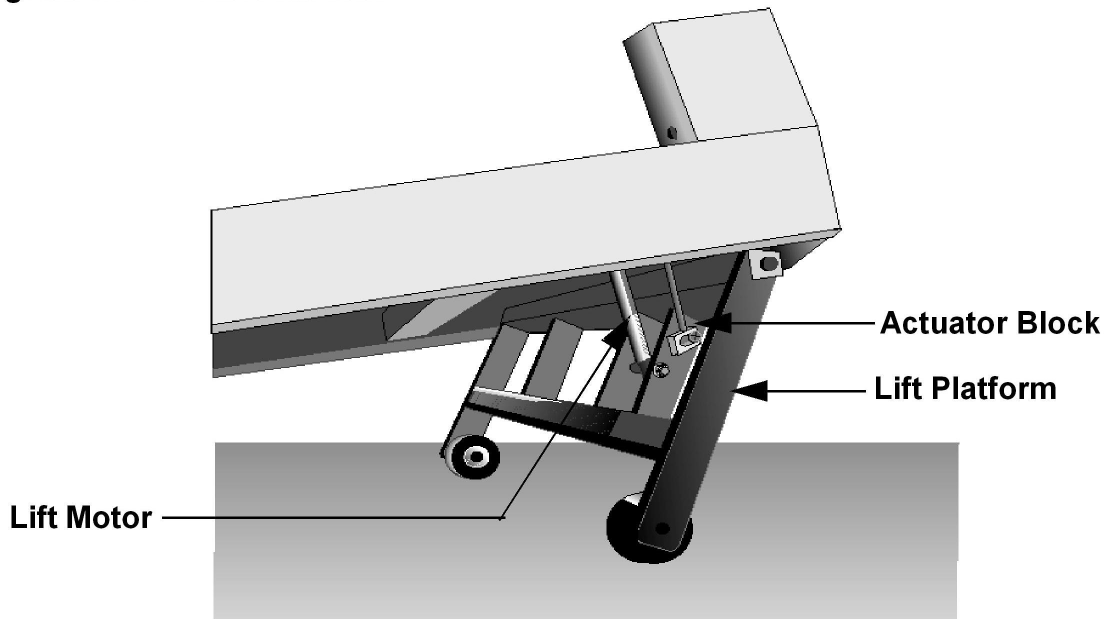
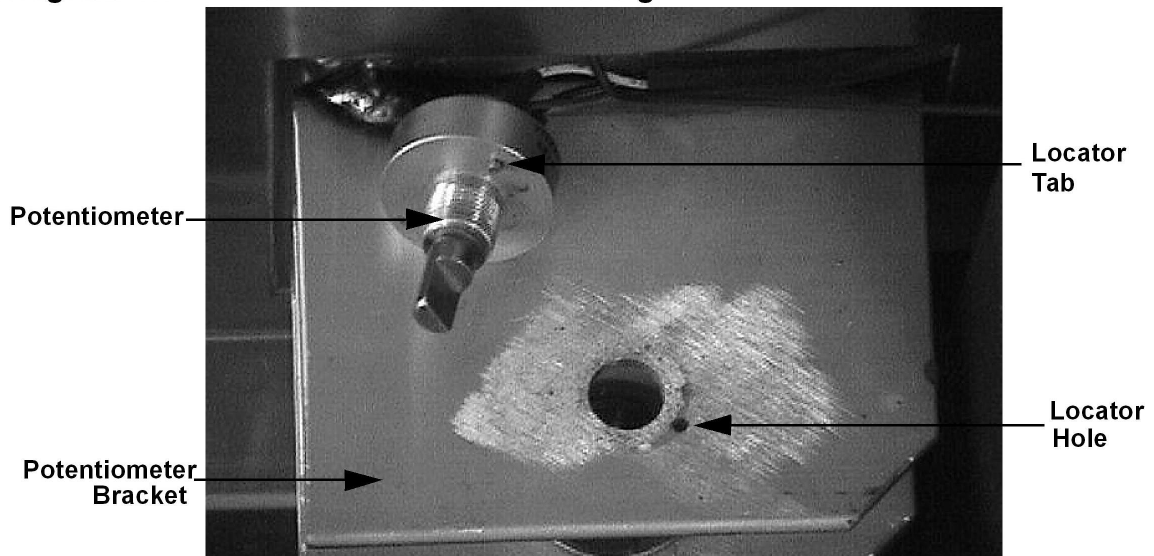


Diagram 6.3B - Lift Platform**Replacing the Lift Platform**

7. With the treadmill still on its right side, position the lift platform at its mounting position.
8. Replace the bolt(s) and nut(s) that secure the lift platform to the treadmill frame.
9. Perform this step on C962i and C964i treadmills, only. Replace the lift shaft. Replace the retaining ring. Orient the lift shaft into the position it was in when removed in step 5. With the lift platform rotated to the front of the treadmill, the flat side of the lift shaft will face to the rear of the treadmill when correctly oriented. See Diagram 6.3A. Align the hole in the lift platform with the hole in the lift shaft and replace the pin. Carefully tap the pin into place with a mallet or hammer. Slide the coupler onto the the lift shaft and replace the lift potentiometer. Align the flat side of the lift potentiometer shaft with the flat side of the lift shaft and and position the lift potentiometer so that the locator tab on the lift potentiometer fits into the locator hole in the lift potentiometer bracket. See Diagram 6.3C. Carefully tighten the lift potentiometer nut. Do not overtighten the lift potentiometer nut. If the coupler has set screws, align the coupler over the junction of the lift potentiometer shaft and the lift shaft and tighten the coupler set screws.

Diagram 6.3C - Lift Potentiometer Mounting



10. Skip this step on C962i and C964i treadmills. Replace the bolt that connects the actuator block to the lift platform.
11. Replace the lower bolt and nut that secures the lift motor to the lift platform.
12. Check the operation of the treadmill as described in Section Three of this appendix.